
TECHNIC SPARE PARTS DRAWINGS

WASHER EXTRACTORS

SERIES "EVOLUTION TECHNOLOGY"

Model:

LA-25 MP

March 2009



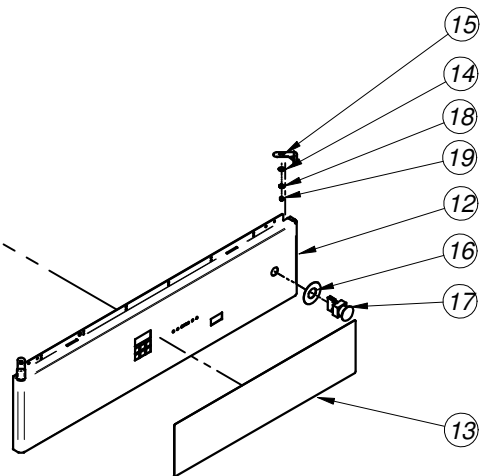
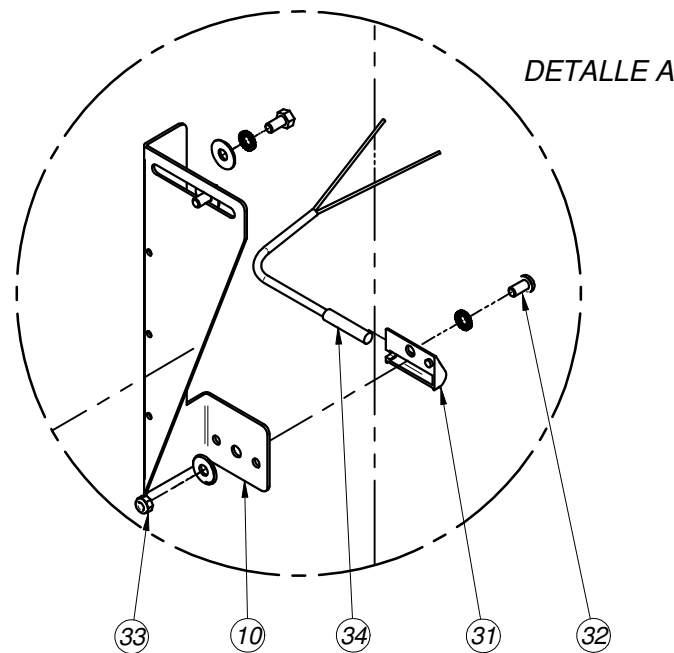
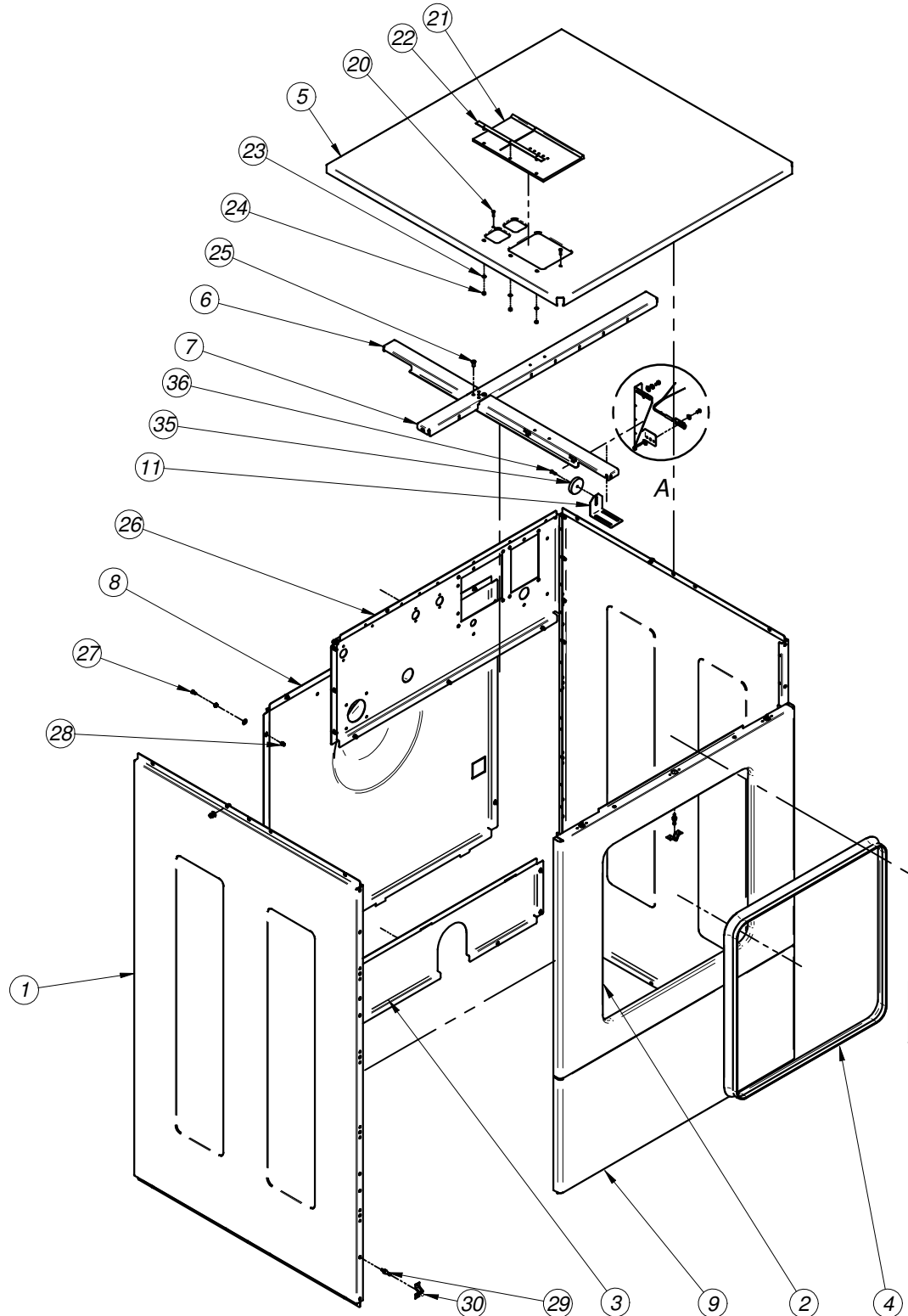
Fagor Industrial



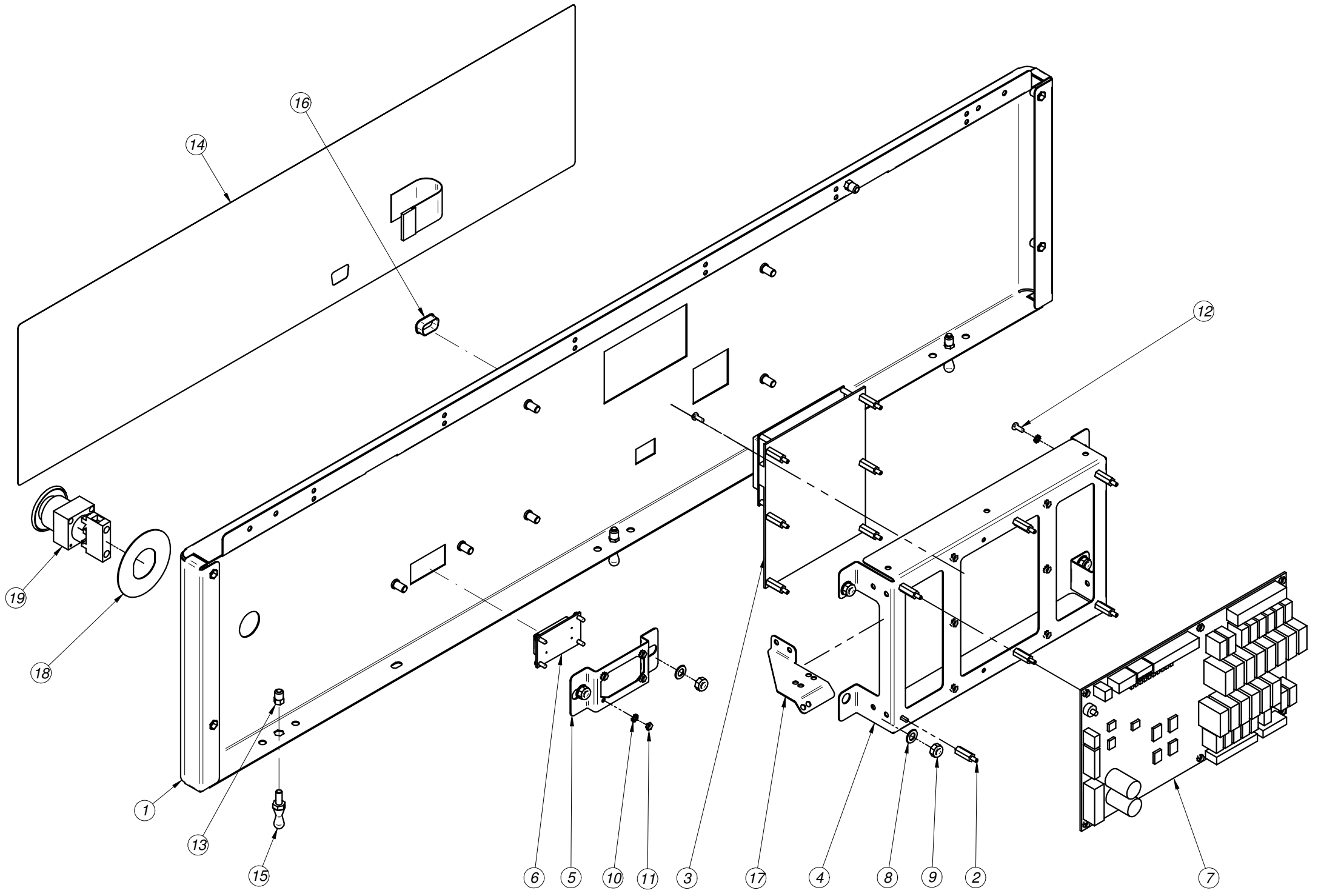
Fagor Industrial

WASHER EXTRACTOR MODEL LA-10-13-18-25 MP

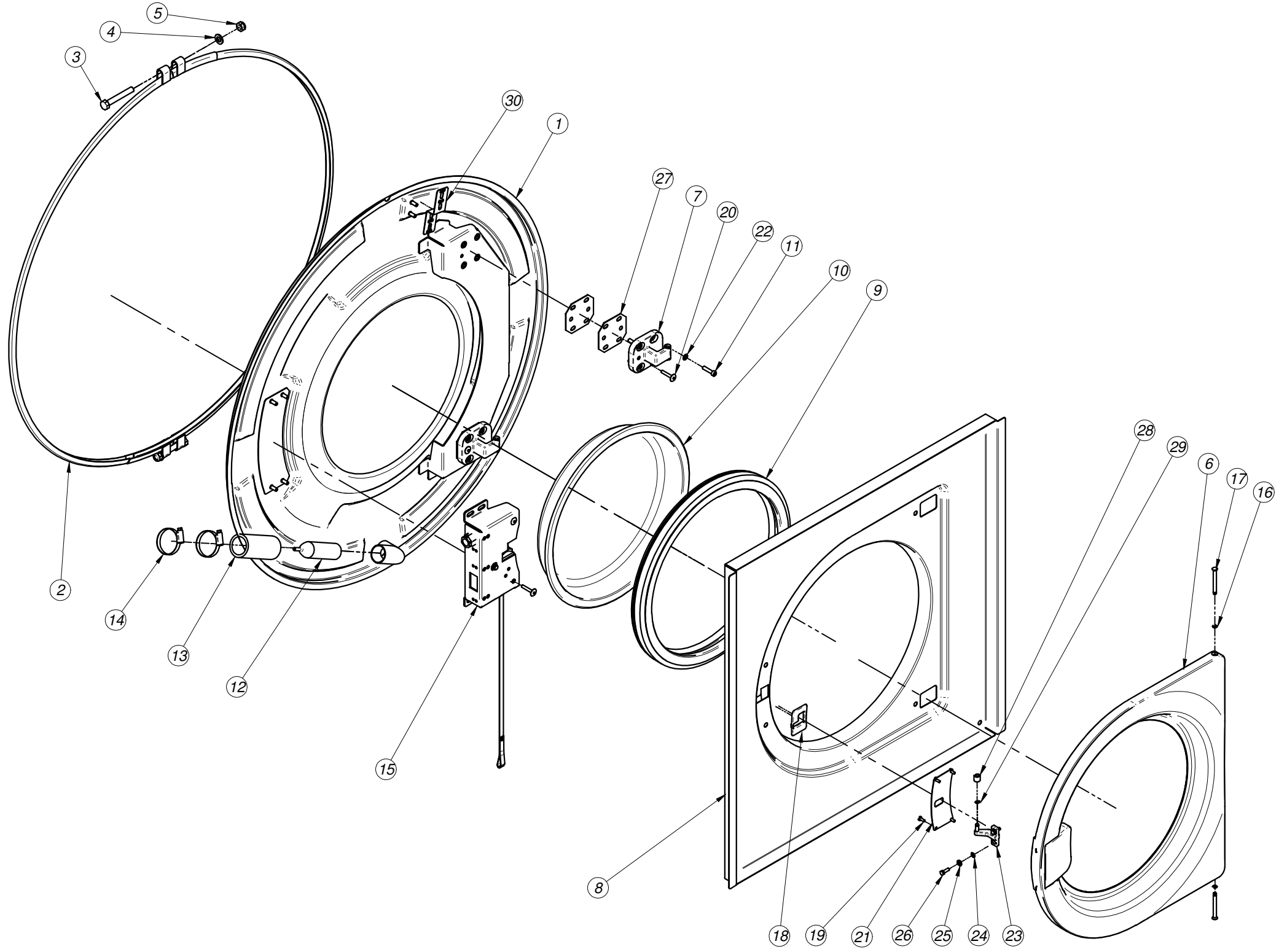




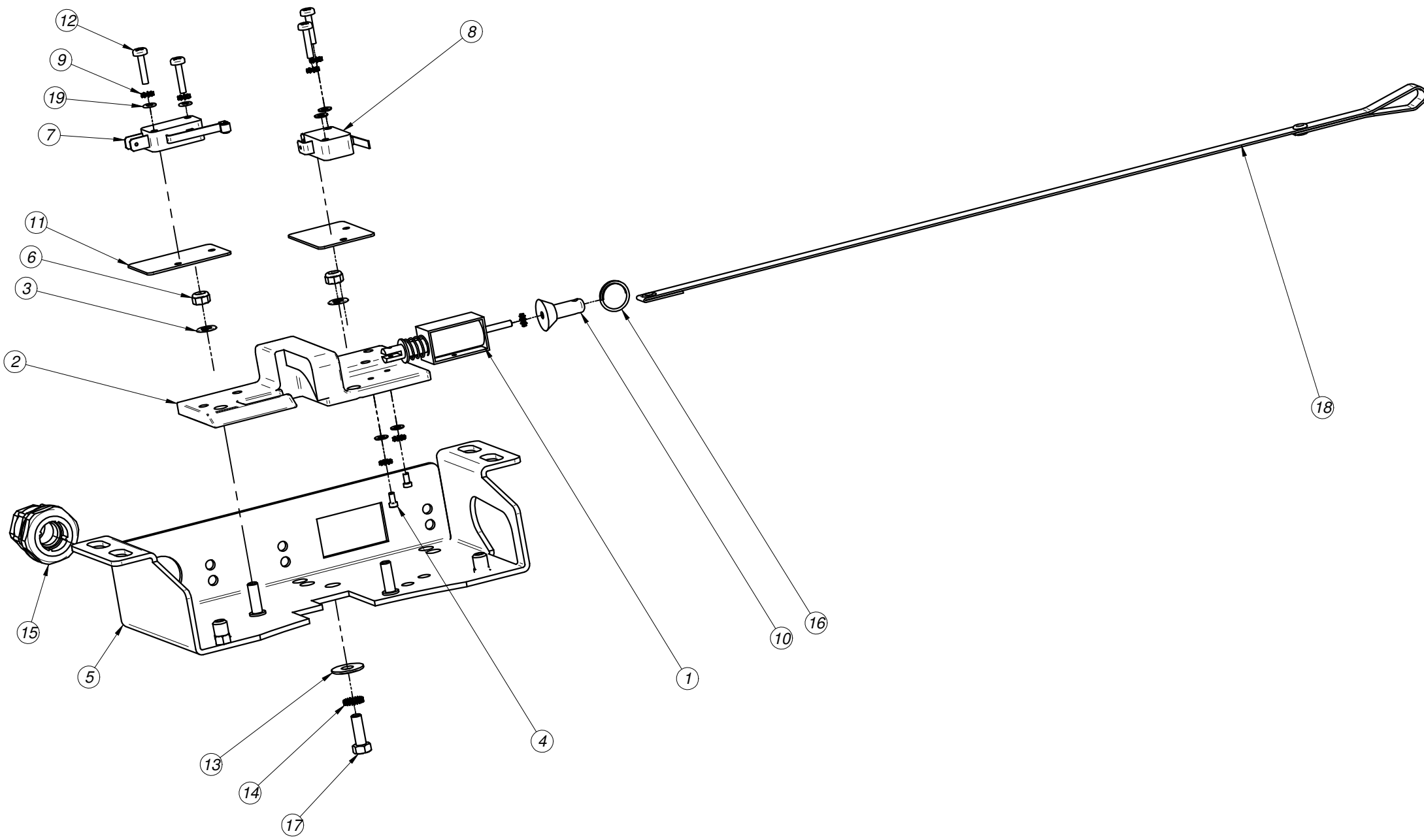
MOD.	WASHER EXTRACTOR 25		ZONA	FITTING	
Nº	CODIGO	DENOMINACION	Cant.		
1	P640308000	SIDE PANEL 25	2		
2	P640306000	FRONT PANEL 25	1		
3	P640305000	REAR BOTTON PANEL	1		
4	P620324000	CURTAIN LF-13-18-25	1		
5	P640313000	COMPLETE WORKTOP 25	1		
6	P640309000	LONGITUDINAL CROSSBAR 25	1		
7	P640310000	PARALLEL CROSSBAR 25	1		
8	P640304000	REAR PANEL 25	1		
9	P640311000	SKIRTING LF-25	1		
10	P630315000	SAFETY MICRO BRACKET 18	1		
11	P620219000	MAGNET BRACKET	1		
12	P640320000	CONTROL HOLDER COMP.MP 25	1		
13	P640316000	MP BUTTON LABEL	1		
14	Q302022000	WASHER 16X6X1.2 A.304	26		
15	P620316000	TOP CORNER PROTECTOR	2		
16	Z513006000	ROUND YELLOW LABEL	1		
17	Z513005000	COMPLETE EMERGENCY SWITCH BUTTON	1		
18	Q242030000	WASHER A5 A.304	26		
19	Q221308000	HEX.SCREW.AUT.M5 H.ZINC	2		
20	Q042022000	COUNTERSUNK SCREW M4X15	2		
21	P440704000	TRAY LID 1002436	1		
22	P440705000	TUB TRAY SUPPORT, COMPLETE	1		
23	Q232030000	WASHER A5	3		
24	Q162030000	HEX NUT M5	3		
25	Q411302000	MONOBOLT RIVET D6.35	2		
26	P640303000	REAR PANEL TOMAS 25	1		
27	Q012031000	HEX BOLT M5X10 A.304	23		
28	Q221342000	HEXAGONAL RIVET M5	28		
29	X012612000	LOCK SPIKE	5		
30	X010503000	SPRING LOCK FREI.700	5		
31	Z203010000	MAGNETIC SWITCH FASTENER	1		
32	Q032031000	SCREW M5X10	1		
33	Q222030000	SELF-LOCK.NUT.M5	1		
34	Z203009000	MAGNETIC SWITCH	1		
35	P620337000	IMBALANCE MAGNET DIAM. 50	1		
36	Q042032000	COUNTERSUNK SCREW M5X15 A304	1		



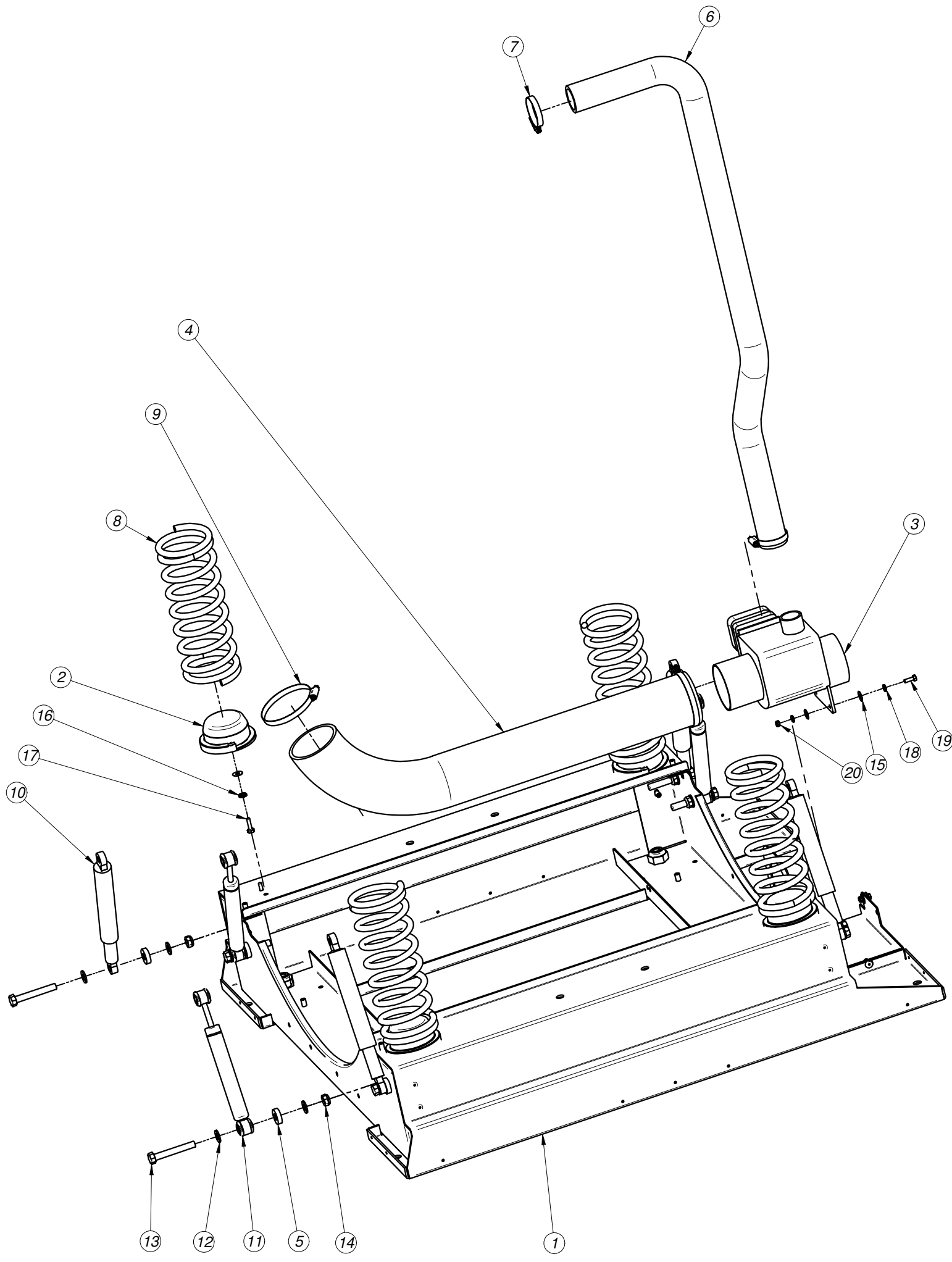
MOD.	WASHER EXTRACTOR 25		ZONA	CONTROL HOLDER	
Nº	CODIGO	DENOMINACION	Cant.		
1	P640320000	CONTROL HOLDER COMP.MP 25	1		
2	T133007000	SPACER M3	12		
3	P643008000	MP GRAPHIC DISPLAY CARD	1		
4	P643009000	MP DISPLAY SUPPORT	1		
5	P620338000	C.I. SWITCH HOLDER	1		
6	P623017000	C.I. POWER SWITCH	1		
7	P613005000	INLET-OUTLET RELAY CARD	1		
8	Q232040000	WASHER A6	6		
9	Q222012000	SELF-LOCK.NUT.M6	6		
10	Q242010000	WASHER A.3 A304	21		
11	Q162010000	HEX.SCREW.M3	16		
12	T133008000	ANCHORING SCREW M3	10		
13	Q221342000	HEXAGONAL RIVET M5	8		
14	P640316000	MP BUTTON LABEL	1		
15	P450303000	LOCK SPIKE	3		
16	P613014000	PROG. SERIES PORT PLUG.	1		
17	P620359000	PRESSOSTAT HOSE SUPPORT	1		
18	Z513006000	ROUND YELLOW LABEL	1		
19	Z513005000	COMPLETE EMERGENCY SWITCH BUTTON	1		



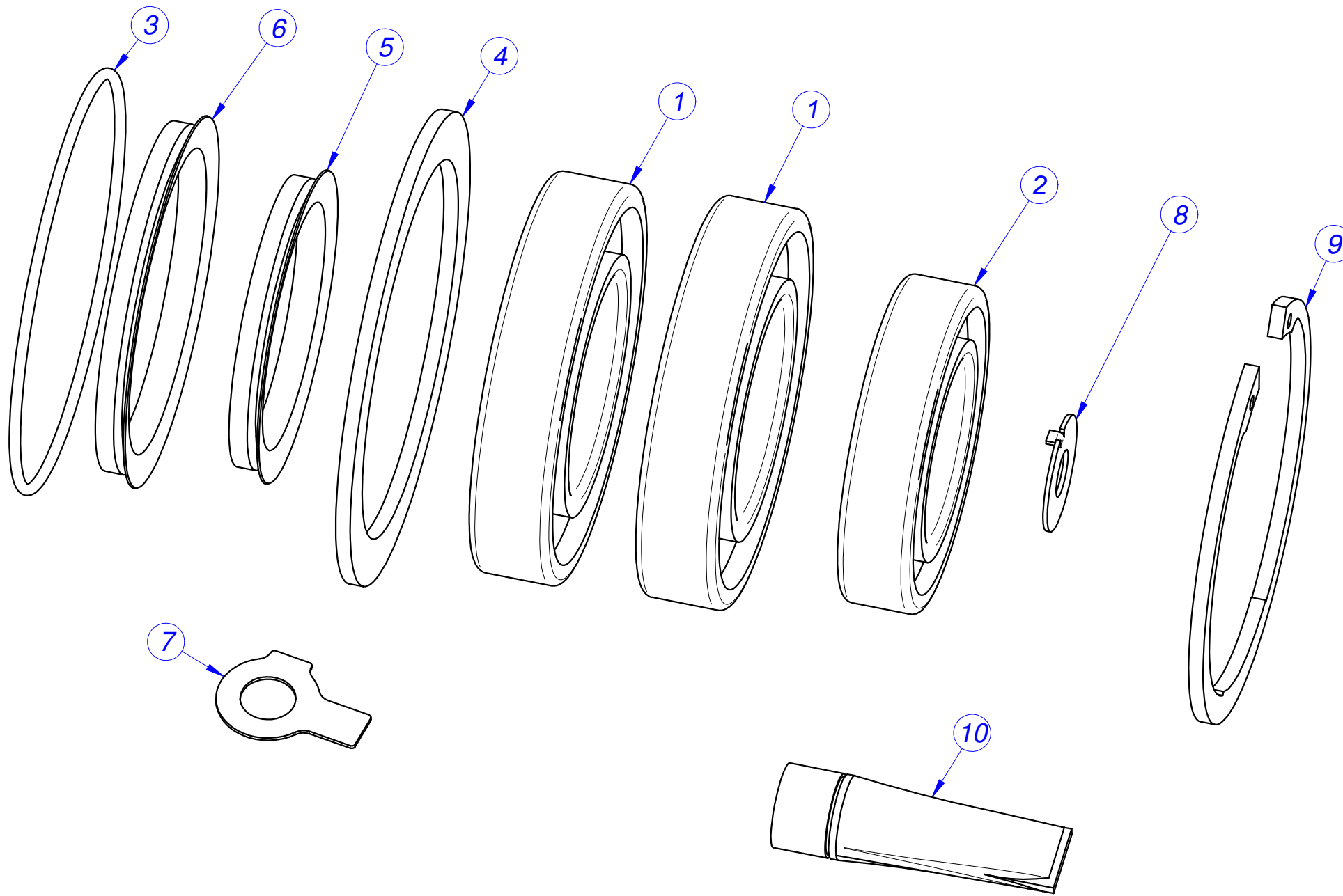
MOD.	WASHER EXTRACTOR 25		ZONA	TUB FRONT	
Nº	CODIGO	DENOMINACION	Cant.		
1	P646008000	COMPLETE TUB FRONT 25	1		
2	P646107000	TUB LOCK 25	2		
3	Q011369000	HEX.SCREW.M10X70 H.ZINC	2		
4	Q232060000	WASHER A10	2		
5	Q221306000	HEX.SCREW.AUT.M10 8.8 ZINC	2		
6	P620527000	DOOR FRAME 13,18,25	1		
7	P620502000	DOOR HINGE	2		
8	P620501000	DOOR FRONT PANEL	1		
9	P620528000	DOOR GASKET 13,18,25	1		
10	P530503000	DOOR GLASS	1		
11	Q122044000	BOLT, ALLEN M6x25	8		
12	P445002000	PRESSURE SWITCH	1		
13	P502106000	OVERFLOW PIPE	1		
14	Q881306000	CLAMP 32-50L	2		
15	P620531000	COMPLETE LOCK 13,18,25	1		
16	Q272020000	SAFETY WASHER 4	2		
17	P620514000	DOOR PIN	2		
18	P620515000	LOCK TRIM	1		
19	Q032021000	CURVED SCREW M4X10	4		
20	Q152038000	BOLT M5X30	4		
21	P620512000	LOCK COVER 13.18	1		
22	Q232040000	WASHER A6	8		
23	P620505000	LOCK ADJUSTABLE HOOK	1		
24	Q232030000	WASHER A5	2		
25	Q242030000	WASHER A5 A.304	2		
26	Q012032000	HEX BOLT M5X15 A.304	2		
27	P620521000	HINGE WEDGE	4		
28	P610506000	DOOR BUSHING	1		
29	Q302061000	SAF. RING A6 DIN471	1		
30	P626128000	PRESSOSTAT PIPE SUPPORT	1		



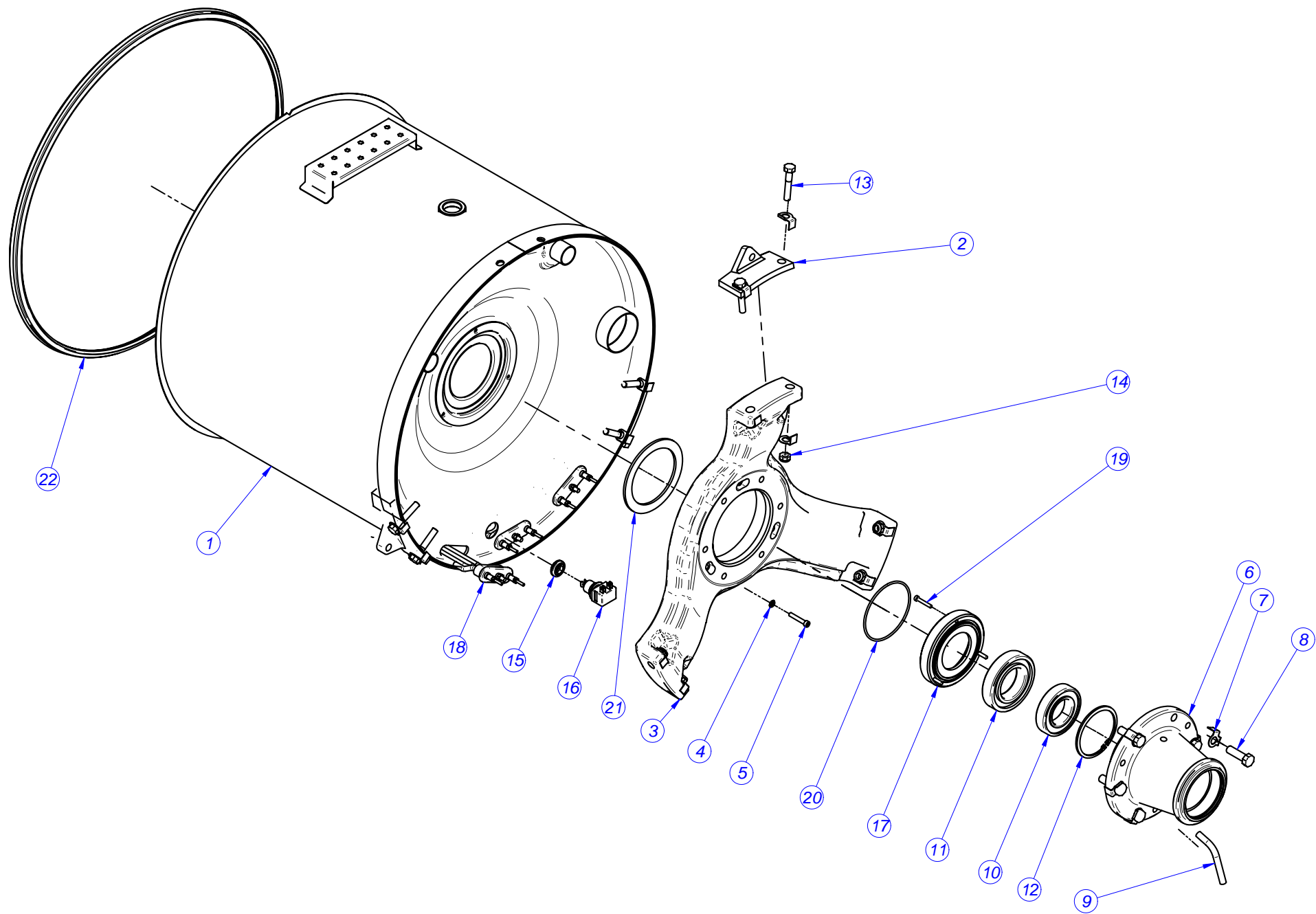
MOD.	WASHER EXTRACTOR 25		ZONA	LOCK	
Nº	CODIGO	DENOMINACION	Cant.		
	P620531000	COMPLETE LOCK	1		
1	P613002000	DOOR ELECTROMAGNET	1		
2	P620522000	LOCK BASE V2	1		
3	Q232030000	WASHER A5	2		
4	Q151396000	BOLT, ALLEN M2.5x5	2		
5	P620530000	COMPLETE LOCK WEDGE	1		
6	Q222030000	SELF-LOCK.NUT.M5	2		
7	R010534000	DOOR CLOSED SWITCH	1		
8	P620526000	DOOR BLOCKED FLAT SWITCH	1		
9	Q242010000	WASHER A.3 A304	8		
10	P620529000	UNLOCK	1		
11	R010535000	SPACER PLATE	2		
12	Q032012000	CURVED SCREW M3X15	4		
13	Q302022000	WASHER 16X6X1.2 A.304	1		
14	Q242030000	WASHER A5 A.304	1		
15	R073004000	STUFFING BOX	1		
16	P620525000	ELECTROMAGNET RING	1		
17	Q012032000	HEX BOLT M5X15 A.304	1		
18	P620520000	DOOR PULL	1		
19	Q232010000	FLAT WASHER A3,DIN125	6		
20	P623010000	DOOR WIRING	1		



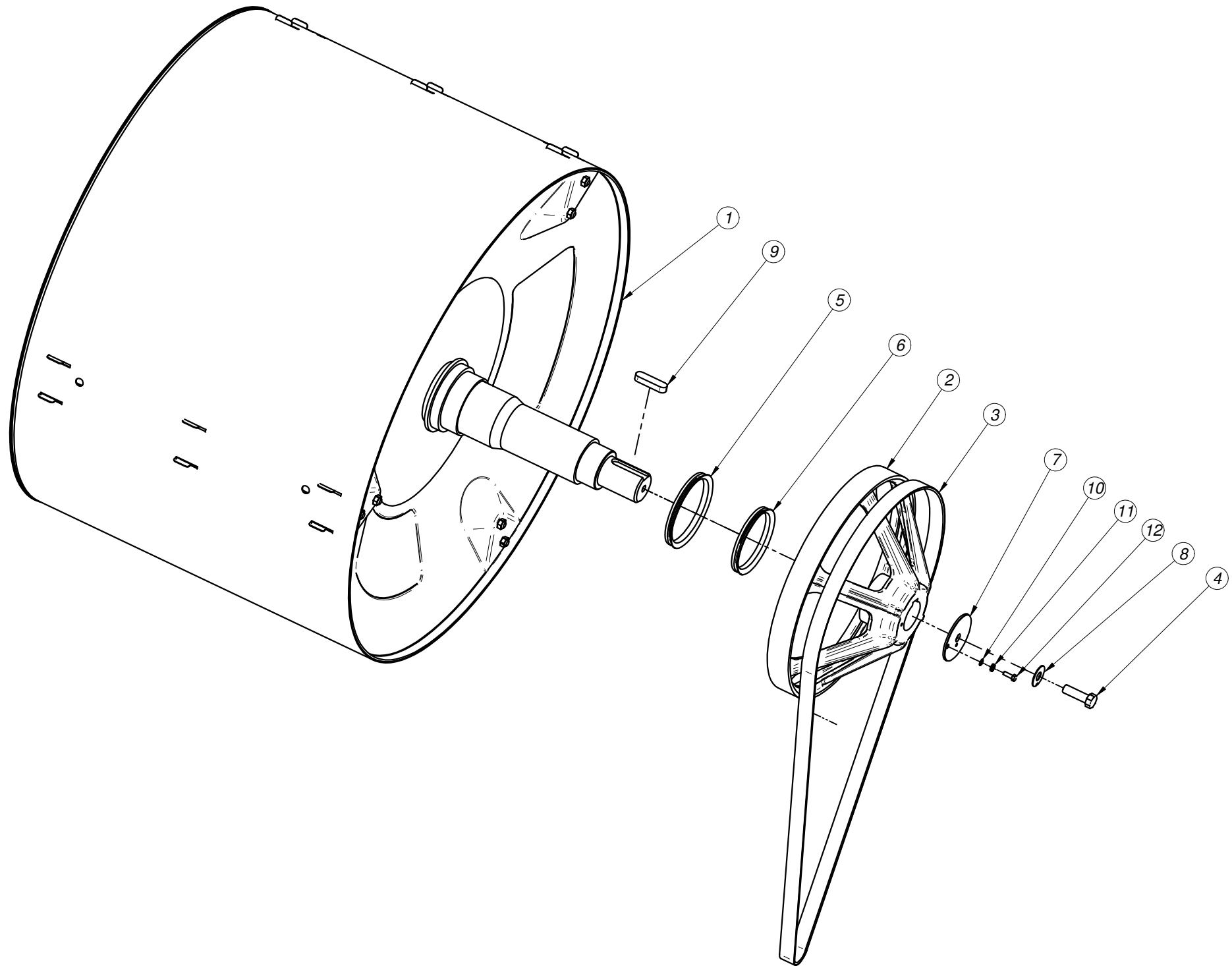
MOD.	WASHER EXTRACTOR 25		ZONA	FRAME	
Nº	CODIGO	DENOMINACION	Cant.		
1	P640101000	COMPLETE FRAME 25	1		
2	P640106000	SPRING BASE 25	4		
3	P532103000	DRAIN VALVE	1		
4	P532118000	TRAY PIPE LF 25	1		
5	P620107000	SHOCK ABSORBER BUSHING	8		
6	P640703000	OVERFLOW PIPE 25	1		
7	Q881306000	CLAMP 32-50L	2		
8	P640108000	SPRING 25	4		
9	Q881326000	CLAMP 70-90	2		
10	P630110000	SHOCK ABSORBER 250NW	4		
11	N110102000	HYDRAULIC SHOCK ABSORBER	4		
12	Q232060000	WASHER A10	16		
13	Q011369000	HEX.SCREW.M10X70 H.ZINC	8		
14	Q221306000	HEX.SCREW.AUT.M10 8.8 ZINC	8		
15	Q302022000	WASHER 16X6X1.2 A.304	12		
16	Q242040000	WASHER A6 A.304	8		
17	Q012043000	HEX BOLT M6X20 A.304	8		
18	Q242030000	WASHER A5 A.304	4		
19	Q012032000	HEX BOLT M5X15 A.304	2		
20	Q221308000	HEX.SCREW.AUT.M5 H.ZINC	2		



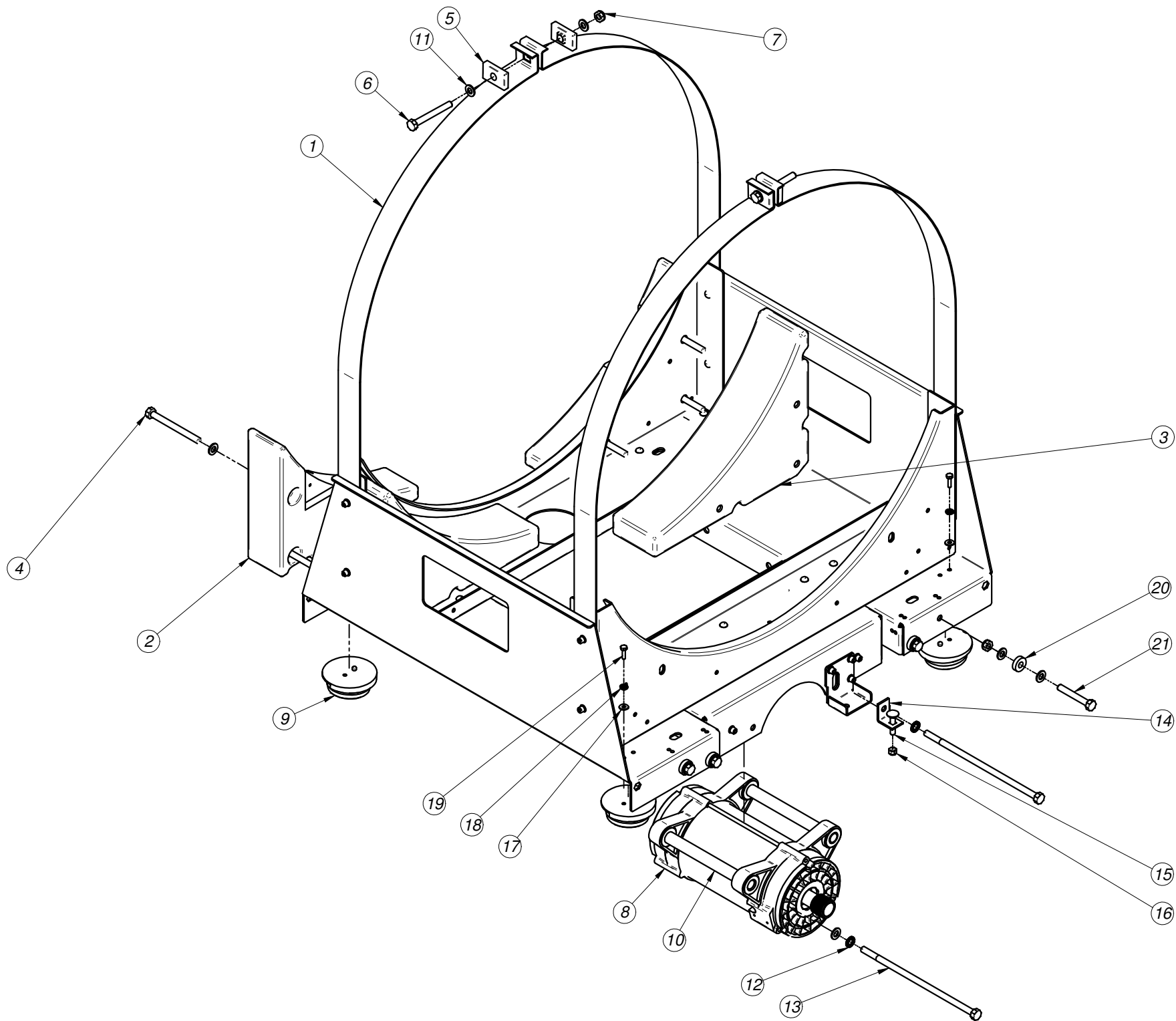
MOD.	WASHER EXTRACTOR 25		AREA	BEARING KIT	
No	CODE	DENOMINATION	Quant.		
	1300000164	BEARING-SEALS KIT FOR WASHER 25 KG.			
		Included:			
1	P644903	BEARING 6216-2RS1	2		
2	P644904	BEARING 6313-2Z	1		
3	Q307083	O RING GASKET 150x3	1		
4	P646109	COUNTERRETAIN SEAL 25	1		
5	P644915	V-RING RETAINER 90	1		
6	P644916	V-RING RETAINER 100	1		
7	Q271304	SECURITY WASHER	10		
8	Q301329	SECURITY WASHER 13	1		
9	Q301045	SAFETY RING SEEGER INT.130	1		
10	P536544	GREASE AMBLYGON TA 15/2	1		



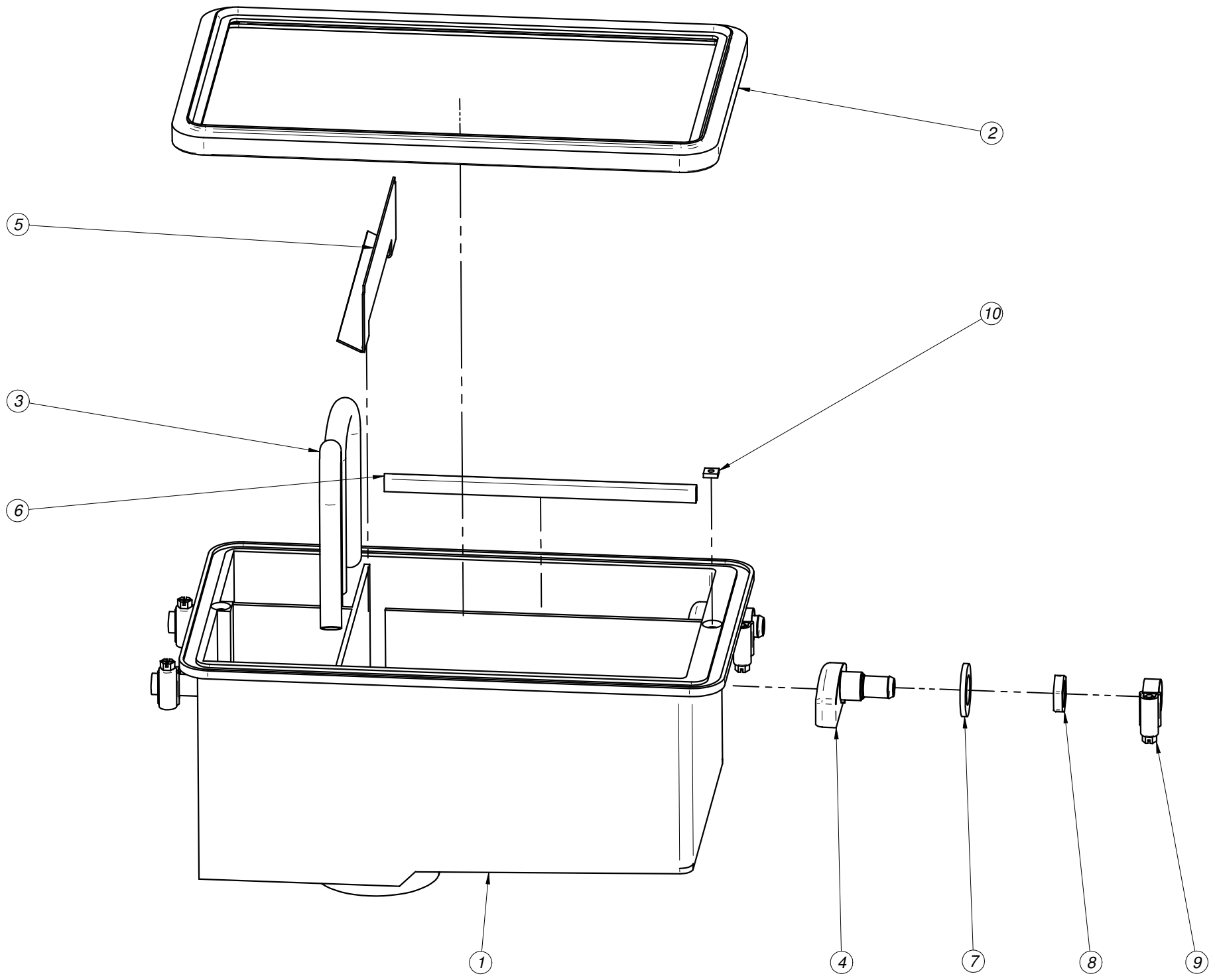
MOD.	WASHER EXTRACTOR 25		ZONA	TUB	
Nº	CODIGO	DENOMINACION	Cant.		
1	P646103000	COMPLETE TUB 25	1		
2	P646012000	BOLT SUPPORT 25	3		
3	P636014000	TUB BASE REINFORCEMENT 25	1		
4	Q232040000	WASHER A6	5		
5	Q122045000	BOLT, ALLEN M6x35 INOX	5		
6	P646015000	BEARING SUPPORT 25	1		
7	Q271304000	SAFETY WASHER 16 DIN 463	30		
8	Q151590000	HEX BOLT M16x60 DIN 931 12	10		
9	P626015000	DRAINAGE PIPE	1		
10	P644904000	BEARING 6312-2Z	1		
11	P644903000	BEARING 6216-2RS1	1		
12	Q301045000	INT. SAFETY RING 130	1		
13	Q151590000	HEX BOLT M16x60 DIN 931 12	10		
14	Q221347000	HEX NUT AUT.M16	10		
15	Z953003000	RUBBER BUSHING FOR THERMOSTAT	1		
16	P503025000	THERMOSTAT	1		
17	P646003000	COUNTER RETAINER BUSHING 25	1		
18	P533001000	HEATING ELEMENT 6000 W	3		
19	Q122034000	BOLT, ALLEN M5x30 INOX	3		
20	Q307083000	"O" RING. 150x3	1		
21	P646109000	BUSHING GASKET SEAL 25	1		
22	P646110000	TUB FRONT GASKET 25	1		



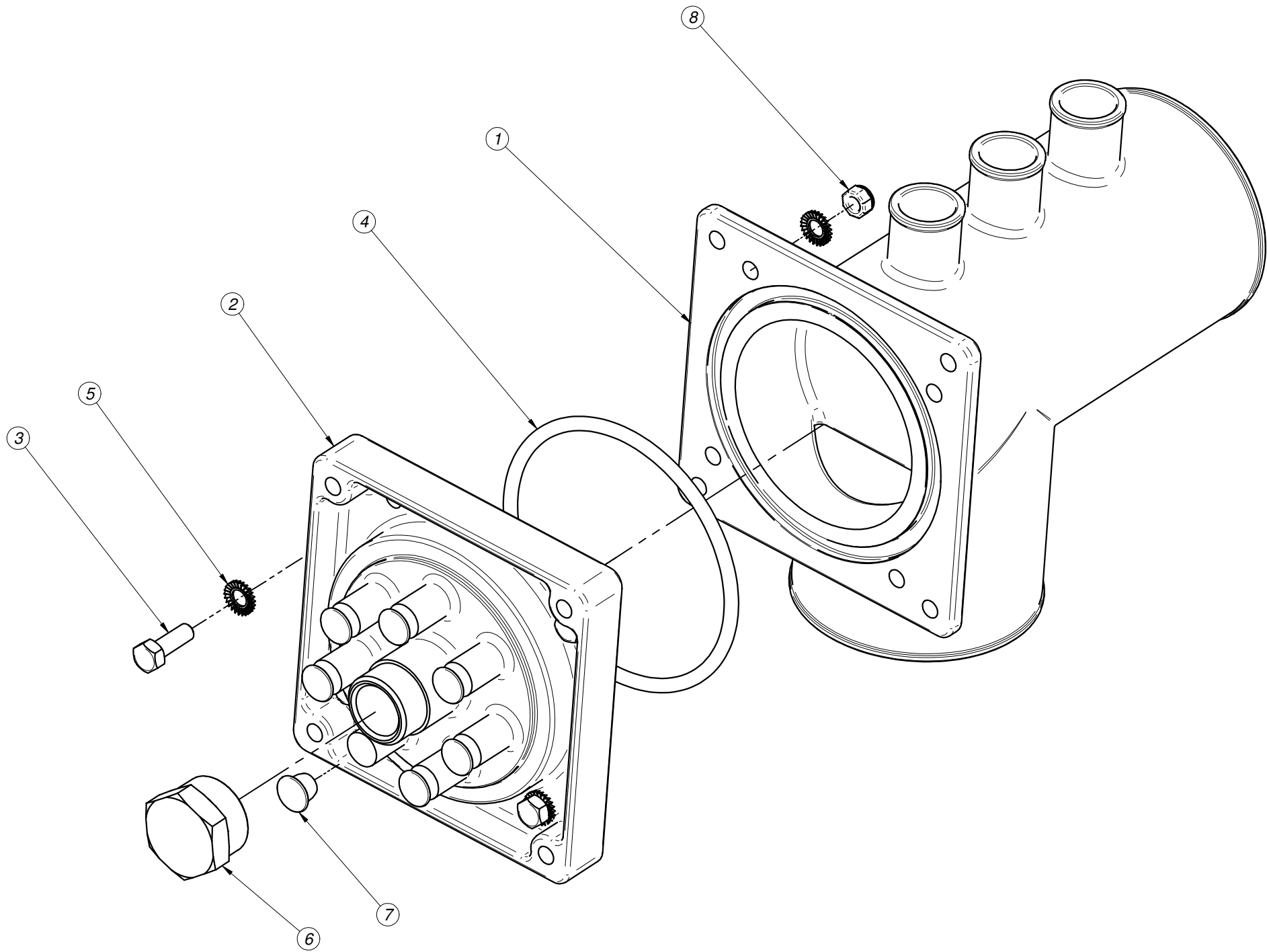
MOD.	WASHER EXTRACTOR 25		ZONA	DRUM	
Nº	CODIGO	DENOMINACION	Cant.		
1	P644912000	COMPLETE DRUM 25	1		
2	P646013000	DRUM PULLEY 25	1		
3	P645901000	BELT LA-25	1		
4	Q011376000	HEX.SCREW.M12X40 H.ZINC	1		
5	P644916000	V-RING RETAINER 100	1		
6	P644915000	V-RING RETAINER 88	1		
7	P626012000	PULLEY WASHER 13.18	1		
8	Q301329000	SAFETY WASHER 13	1		
9	P626010000	PIN 14x9x50	1		
10	Q232030000	WASHER A5	1		
11	Q242030000	WASHER A5 A.304	1		
12	Q012032000	HEX BOLT M5X15 A.304	1		



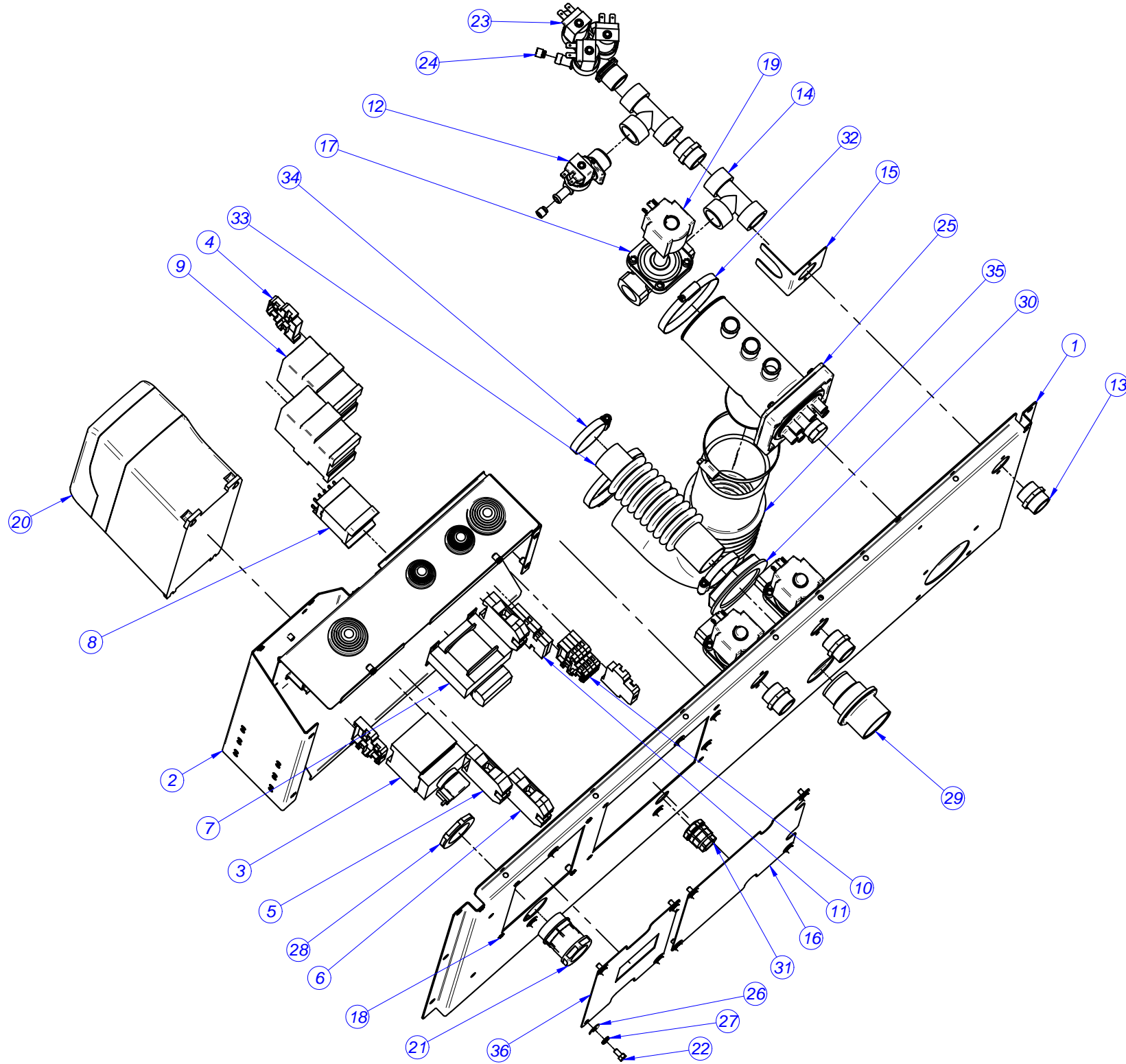
MOD.	WASHER EXTRACTOR 25		ZONA	CRADLE	
Nº	CODIGO	DENOMINACION	Cant.		
1	P640201000	COMPLETE CRADLE 25	1		
2	P640205000	FRONT COUNTERWEIGHT 25	2		
3	P640208000	REAR COUNTERWEIGHT 25	2		
4	Q151356000	HEX BOLT M10X110	6		
5	P620208000	TUB FASTENER	4		
6	Q011360000	HEXAGONAL SCREW M10X80	2		
7	Q221306000	HEX.SCREW.AUT.M10 8.8 ZINC	12		
8	P645902000	MOTOR 25 3KW	1		
9	P640106000	SPRING BASE V2	4		
10	P645903000	MOTOR BRACKET PIPE 25	2		
11	Q232060000	WASHER A10	29		
12	Q241560000	WASHER A10 DIN6798	4		
13	Q151591000	HEX BOLT M10X260 (12.9) DIN931	2		
14	P620214000	MOTOR TENSOR	1		
15	Q151393000	SCREW DIN 603 M8x35	1		
16	Q221309000	HEX.SCREW.AUT.M8 8.8 ZINC	1		
17	Q302022000	WASHER 16X6X1.2 A.304	4		
18	Q242040000	WASHER A6 A.304	4		
19	Q012043000	HEX BOLT M6X20 A.304	4		
20	P620107000	SHOCK ABSORBER BUSHING	16		
21	Q011369000	HEX.SCREW.M10X70 H.ZINC	8		



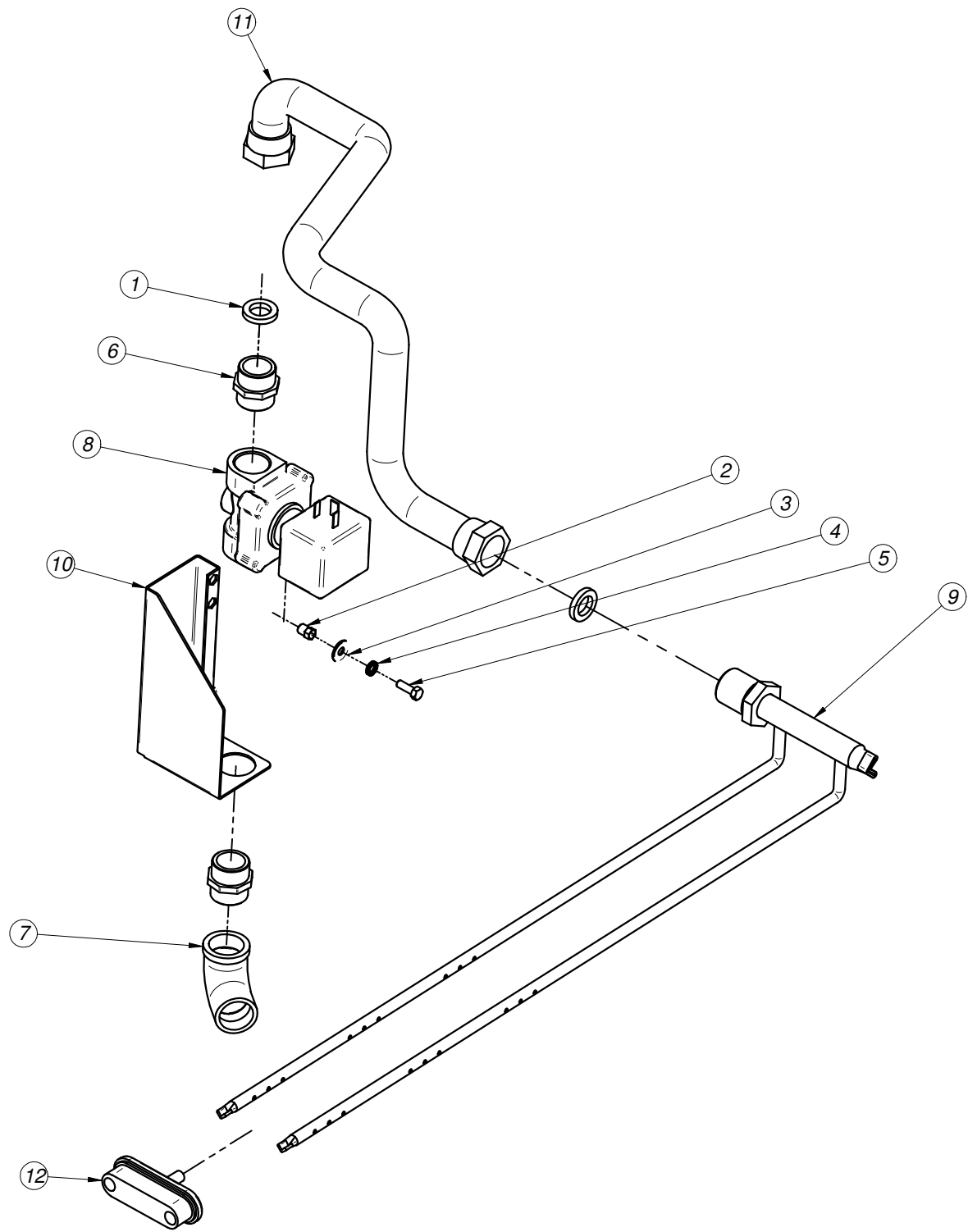
MOD.	WASHER EXTRACTOR 25		ZONA	TRAY	
Nº	CODIGO	DENOMINACION	Cant.		
1	P440700000	DETERGENT TRAY	1		
2	P500702000	TRAY JOINT 1003431	1		
3	P440702000	SIPHON PIPE	2		
4	P440701000	DETERGENT DISPERSER	2		
5	P440715000	BRACKET PROTECTION	1		
6	P440721000	REINFORCEMENT PROFILE	1		
7	Q301302000	FLAT WASHER A17	2		
8	Q223018000	NUT 16X1.5	2		
9	Q881305000	CLAMP 25-40	4		
10	Q222004000	SQUARE NUT M.4	2		



MOD.	WASHER EXTRACTOR 25		ZONA	DOSING	
Nº	CODIGO	DENOMINACION	Cant.		
	P640705000	COMPLETE DOSING	1		
1	P530730000	INTERIOR DISPENSER INLET P	1		
2	P620706000	OUTER DOSING INLET	1		
3	Q012032000	HEX BOLT M5X15 A.304	4		
4	Q307081000	"O" RING 75x4	1		
5	Q242030000	WASHER A5 A.304	8		
6	P620710000	COVER 1/2"	1		
7	P620709000	DISPENSER PLUG	7		
8	Q222030000	SELF-LOCK.NUT.M5	4		



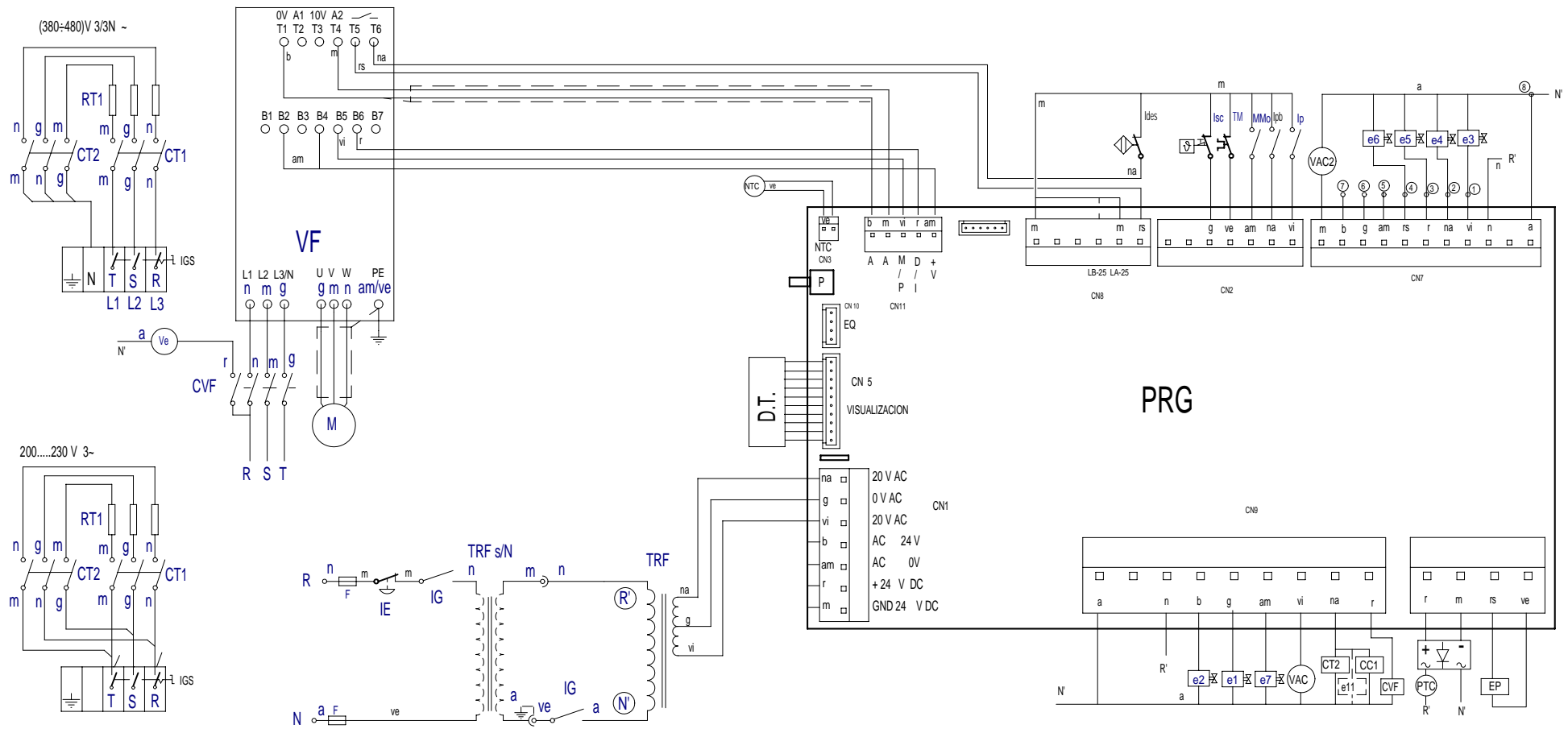
MOD.	WASHER EXTRACTOR 25		ZONA	SOLENOID SUPPORT	
Nº	CODIGO	DENOMINACION	Cant.		
1	P640303000	REAR PANEL TOMAS 25	1		
2	P640315000	SUPPLY PANEL HOLDER COMP.25	1		
3	P537038000	PRINCIPAL SECTION SWITCH	1		
4	Z263303000	END STOP	3		
5	R673010000	THROUGH TERMINAL BLUE 35MM	1		
6	Z103035000	EARTH TERMINAL 35MM	2		
7	P623028000	TRANSFORMER 0-20-0-230	1		
8	Z213007000	CONTACTOR 230 V. 50-60 HZ	1		
9	X183011000	CON.3RT1024-1AN20 230V 50H	2		
10	P623006000	TERMINAL STRIP 2 PISOS	8		
11	R073005000	FUSE HOLDER TERMINALS	2		
12	Z701135000	E.V.SIMPLE.220V	1		
13	Z102301000	HOSE 3/4"	4		
14	P535020000	T at 90°-3/4"	2		
15	P535003000	SOLENOID VALVE STOP	1		
16	P620342000	REAR COVER V2	1		
17	Z102305000	Valve 3/4"	3		
18	Q221342000	HEXAGONAL RIVET M5	4		
19	Z102323000	COIL 240 V.	3		
20a	P643012000	FRECUENCY INVERTER 25 400V PROGRAMMED	1		
20b	P643013000	FRECUENCY INVERTER 25 220V PROGRAMMED	1		
21	R033002000	STUFFING BOX	1		
22	Q012031000	HEX BOLT M5X10 A.304	14		
23	Z611123000	E.V. TRIPLE COD.255.641	1		
24	P443042000	REGULATOR 3L NE.254,023	2		
25	P640705000	COMPLETE DOSING 25	1		
26	Q302022000	WASHER 16X6X1.2 A.304	14		
27	Q242030000	WASHER A5 A.304	14		
28	R033025000	COUNTERNUT (GAES)	1		
29	Z740701000	STEAM VACUMM PLASTIC PIPE	1		
30	Z310903000	NUT FOR THE STEAM VACUMM PLASTIC PIPE	1		
31	R073004000	STUFFING BOX	1		
32	Q881326000	CLAMP 70-90	3		
33	P620708000	STEAM OUTLET PIPE	1		
34	Q881306000	CLAMP 32-50L	2		
35	P630701000	TUB DISPENSER PIPE	1		
36	P530235000	CIRCUIT BREAKER COVER LA-25	1		



MOD.	WASHER EXTRACTOR 25		ZONA	STEAM	
Nº	CODIGO	DENOMINACION	Cant.		
1	P535024000	WASHER TEFLON 24X15X4	2		
2	Q221342000	HEXAGONAL RIVET M5	2		
3	Q302022000	WASHER 16X6X1.2 A.304	2		
4	Q242030000	WASHER A5 A.304	2		
5	Q012032000	HEX BOLT M5X15 A.304	2		
6	Z102301000	HOSE 3/4"	2		
7	Z718421000	ELBOW 3/4"	1		
8	P535023000	STEAM VALVE 3/4" 50-60Hz	1		
9	P645002000	STEAM INYECTOR 25	1		
10	P645001000	STEAM VALVE BRACKET SUPPORT 25	1		
11	P545011000	STEAM PIPE	1		
12	P445011000	LOCK INYECTOR	1		
	P505008000	COMPLETE LOCK	2		
	P533054000	STEAM VALVE WIRE			
	P535019000	STEAM PIPE L-1500	1		

Referencias cableados LA-25 MP
Wires reference LA-25 MP

<i>TEXTO</i>	<i>CODIGO</i>	<i>CANTIDAD</i>
<p><i>Cableado general (incluye cableado motor)</i></p> <p><i>General electric wiring (Included the motor wire)</i></p>	<i>P643002</i>	<i>1</i>
<p><i>Cableado resistencias.</i></p> <p><i>Heating elements wire.</i></p>	<i>P643003</i>	<i>1</i>
<p><i>Cableado plano tarjeta reles a tarjeta display MP.</i></p> <p><i>Display card-Relay card wire.</i></p>	<i>P633009</i>	<i>1</i>
<p><i>Cableado puerta.</i></p> <p><i>Door device wire.</i></p>	<i>P623010</i>	<i>1</i>
<p><i>PTC alimentación bobina cierre.</i></p> <p><i>PTC supply coil door.</i></p>	<i>P643005</i>	<i>1</i>
<p><i>Cable de ventilador</i></p> <p><i>Fan wire</i></p>	<i>P643018</i>	<i>1</i>



Simb / LENG	ESPAÑOL	FRANÇAIS	ENGLISH	DEUTSCH	ITALIANO
CT1, CT2 =	Contacto Calentamiento	Contacteur Chauffe	Heating Contactor	Heizschütz	Contattore Riscaldamento
DP =	Detector posición.	Détecteur position	Position detector	Stellung Taster	Rilevatore posizione
DS1 =	Dosificador Neutralizante.	Doseur Neutralisant	Neutralizer feeder	Dosiervorrichtung Neutralspülmittel	Dosatore Neutralizzante
DS2 =	Dosificador jabon liquido.	Doseur lessive liquide	Liquid soap feeder	Dosiervorrichtung Flüssigseife	Dosatore sapone liquido
DS3 =	Dosificador aditivos.	Doseur additifs	Additive feeder	Dosiervorrichtung Zusatzmittel	Dosatore additivi
D.T. =	Display/Teclado	Écran/Clavier	Display/Keyboard	Elektroventil Kaltwasser	Display/Tastiera
e1 =	Electro válvula agua Fria.	Électrovanne eau Froide	Cold water electrically operated valve	Elektroventil Warmwasser	Elettrovalvola acqua Fredda
e2 =	Electro válvula agua Caliente	Électrovanne eau Chaude	Hot water electrically operated valve	Elektroventil Vorwaschen	Elettrovalvola acqua Calda
e3 =	Electro válvula Prelavado.	Électrovanne Prélavage	Pre-wash electrically operated valve	Elektroventil Hauptwaschgang	Elettrovalvola Prelavaggio
e4 =	Electro válvula Lavado.	Électrovanne Lavage	Wash electrically operated valve	Elektroventil Bleiche	Elettrovalvola Lavaggio
e5 =	Electro válvula Lejia.	Électrovanne Eau de Javel	Bleach electrically operated valve.	Elektroventil Weichspüler	Elettrovalvola Candeggina
e6 =	Electro válvula Suavizante.	Électrovanne Assouplissant	Fabric softener electrically operated valve	Elektroventil entkalktes Wasser	Elettrovalvola Ammorbidente
e7 =	Electro válvula agua Descalcificada	Électrovanne eau Adoucie	Delimed water electrically operated valve	Elektroventil Gleichgewicht	Elettrovalvola acqua Decalcificata
e8, 9, 10 =	Electro válvula Equilibrado	Électrovanne Équilibrage	Balancer electrically operated valve	Elektroventil Dampf	Elettrovalvola Bilanciamento
e11 =	Electro válvula Vapor.	Électrovanne Vapeur	Steam electrically operated valve	Elektroventil Neutralspülmittel	Equilibrado Vapore
e12 (55kg) =	Electro válvula Neutralizante.	Électrovanne Neutralisant.	Neutralizer Electrical valve	Elektromagnet Gerätetür	Elettrovalvola Neutralizzante
EP =	Electroimán de Puerta.	Électro-aimant de Porte	Door electric magnet	Kreislauf gleichgewicht	Elettromagnete Porta
EQU =	Circuito Equilibrado.	Circuit Equilibrage	Balancer Circuit	Störungfilter	Circuito Bilanciamento
FI =	Filtro de Interferencias.	Filter Anti-parasites	Interference filter	Sicherung	Filtro Interferenze
F =	Fusible.	Fusible	Fuse	Meßsensor	Fusibile
G1, G2 =	Galga Sensor.	Jauge Capteur	Sensing gage	Not-Aus-Taster	Calibro Sensore
IE =	Pulsador Parada de emergencia.	Bouton-poussoir Arrêt d'urgence	Emergency stop push button	Hauptschalter	Pulsante Arresto di emergenza
IG =	Interruptor general.	Interrupteur général	General switch	Sicherheitshauptschalter	Interruttore generale
IGS =	Interruptor General de seguridad.	interrupteur Général de sécurité	General safety switch	Ungleichgewichtsschalter	Interruttore Generale di sicurezza
Ides =	Interruptor de desequilibrio.	Interrupteur de balourd	Unbalance switch	Münzschalter	Interruttore di squilibrio
IMo =	Interruptor Monedero.	Interrupteur Monnayeur	Coin slot switch	Schalter Tür geschlossen	Interruttore Portamonete
Ip =	Interruptor puerta Cerrada.	Interrupteur porte Fermée	Closed door switch	Schalter Tür verriegelt	Interruttore porta Chiusa
IpB =	Interruptor puerta bloqueada.	Interrupteur porte verrouillée	Door lock switch	Grenzthermostat	Interruttore porta bloccata
Isc =	Interruptor seguridad Temperatura	Thermostat Limiteur	Hi-limit Thermostat	Motor	Termostato Limitatore
M =	Motor.	Moteur	Motor	Münzvorrichtung	Motore
Mo =	Monedero.	Monnayeur	Coin slot	Temperatursensor	Portamonete
NTC =	Sensor temperatura.	Capteur température	Temperature sensor	Kreislauf Programmiervorrichtung	Sensore temperatura
PRG =	Circuito Programador.	Circuit Programmeur	Programmer Circuit	Widerstand Aufheizung	Circuito Programmatore
RT =	Resistencia Calentamiento.	Résistance Chauffe	Heating Resistors	Motorwärmeschalter	Resistenza Riscaldamento
Tm =	Térmico de Motor.	Thermique du Moteur	Motor hot-wire	Transformator	Termico del Motore
Trf =	Transformador	Transformateur	Transformer	Transformator Modell ohne Neutralstellung	Trasformatore
Trf s/N =	Transformador Versión sin Neutro.	Transformateur Version sans Neutre	Transformer Version without Neutral	Ablassventil	Trasformatore Versione senza Neutro
VAC =	Válvula Vaciado	Vanne Vidange	Emptying valve	Ventilator	Valvola Scarico
Ve =	Ventilador.	Ventilateur	Fan	Frequenzumwandler	Ventola
VF =	Convertidor de Frecuencia.	Convertisseur de Fréquence	Frequency converter	Ventilator Motor	Convertitore di Frequenza
VM =	Ventilador Motor.	Ventilateur Moteur	Fan motor	Anschlussstellen Dosiervorrichtungen	Ventola Motore
1...8 =	Puntos conexión dosificadores.	Points raccordement doseurs	Feeder connection points		Punti connessione dosatori
COLOR	COLORES	COULEURS	COLOUR	FARBEN	COLORE
a =	Azul	Bleu	Blue	Blau	Blu
am =	Amarillo	Jaune	Yellow	Gelb	Giallo
am've =	Amarillo/verde	Jaune / vert	Yellow / green	Gelb/grün	Giallo/verde
b =	Blanco	Blanc	White	Weiß	Bianco
g =	Gris	Gris	Grey	Grau	Grigio
m =	Marrón	Marron	Brown	Braun	Marrone
n =	Negro	Noir	Black	Schwarz	Nero
na =	Naranja	Orange	Orange	Orange	Arancio
r =	Rojo	Rouge	Red	Rot	Rosso
rs =	Rosa	Rose	Pink	Rosa	Roseo
ve =	Verde	Vert	Green	Grün	Verde
vi =	Violeta	Violet	Purple	Violett	Viola